

# E-4340

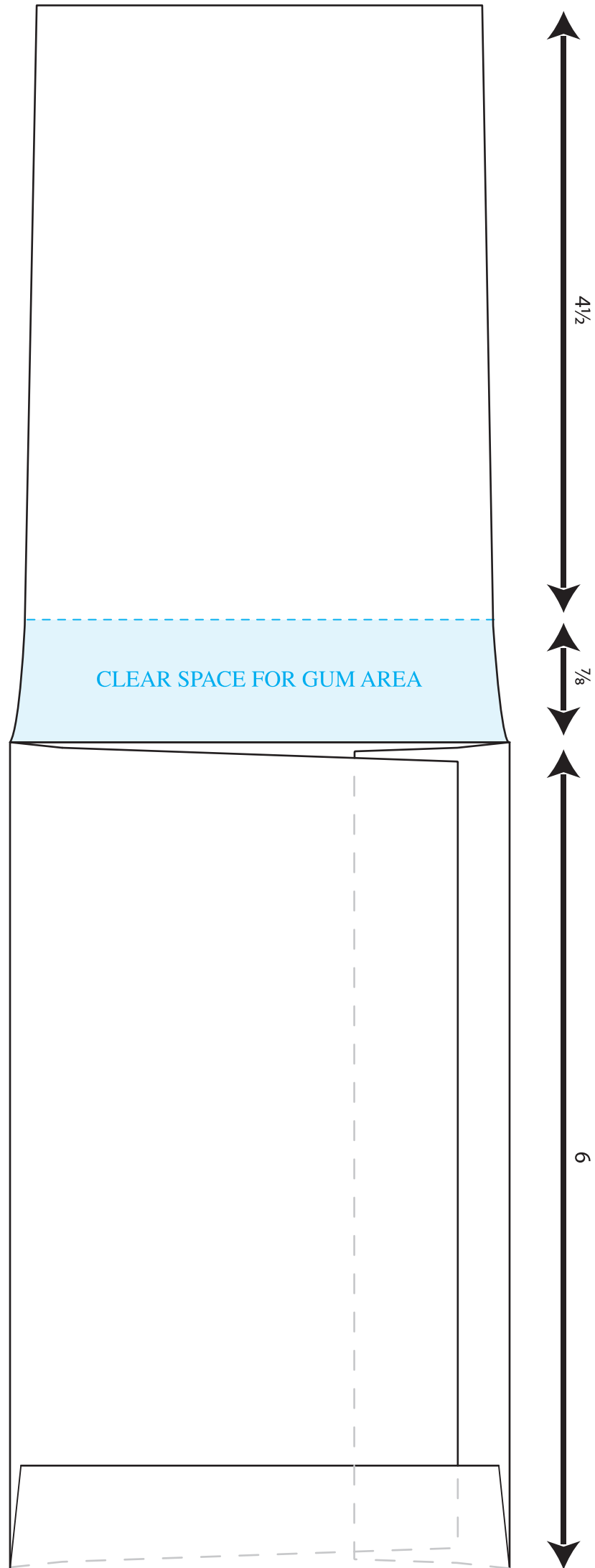
## Parking Ticket/Jewelry Envelope

Envelope size:  $3\frac{5}{8}$ " x 6"

Receipt Flap:  $3\frac{3}{8}$ " x  $4\frac{1}{2}$ "

Ext. Sealed Pocket:  $3\frac{9}{16}$ " x  $6\frac{7}{8}$ "

*This dieline requires an 11x17 sheet  
in order to be printed at 100%*



*INSIDE*

**Supplies Shops®**



# E-4340

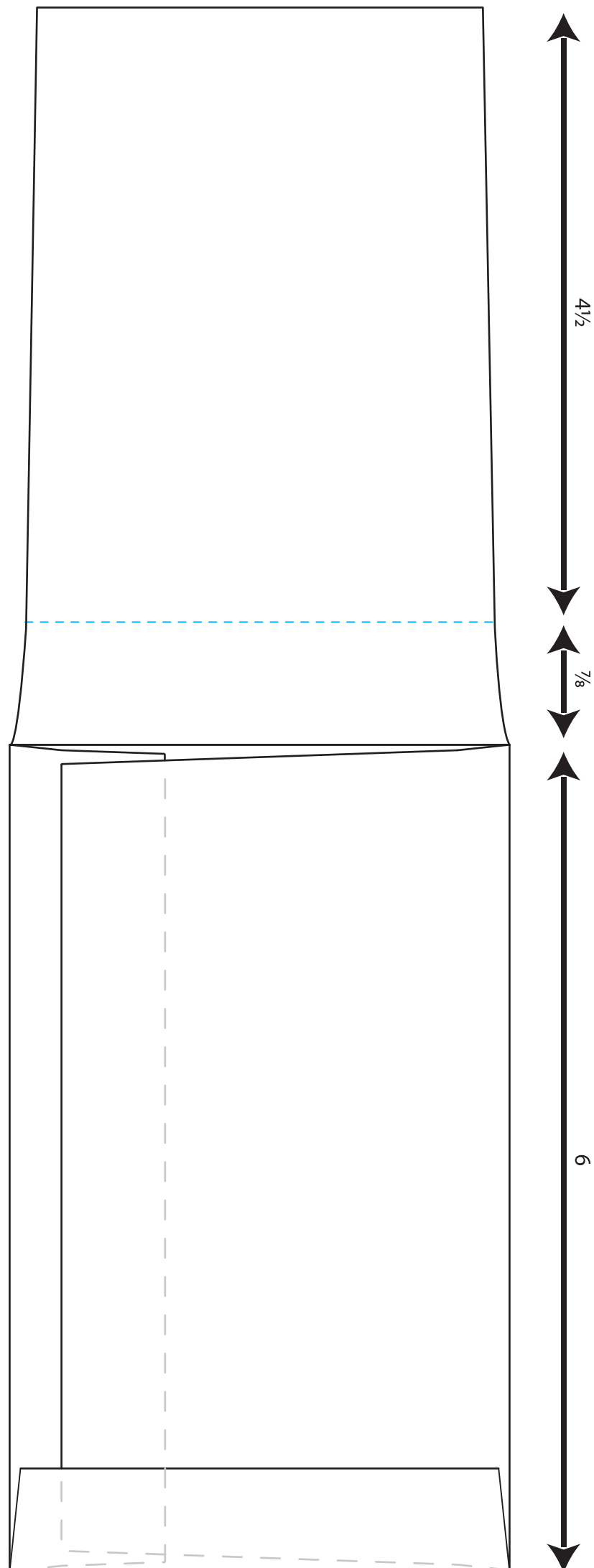
## Parking Ticket/Jewelry Envelope

**Envelope size:** 3<sup>5</sup>/<sub>8</sub>" x 6"

**Receipt Flap:** 3<sup>3</sup>/<sub>8</sub>" x 4<sup>1</sup>/<sub>2</sub>"

**Ext. Sealed Pocket:** 3<sup>9</sup>/<sub>16</sub>" x 6<sup>7</sup>/<sub>8</sub>"

*This dieline requires an 11x17 sheet  
in order to be printed at 100%*



*OUTSIDE*

**Supplies Shops®**

